



MANUAL

Manual

There are also people who would like to have a height-adjustable desk that does not work on electricity. For these people this is a suitable model, because this model is adjustable in height by means of a hand crank.



Specifications

Leg orientation: rectangular

Height adjustable range: 680 - 1130 mm

Width adjustable range: 1150 - 1800 mm

Length bracket: 600 mm

Length foot: 700 mm

Foot type: flat foot

Max. lifting capacity: 80 kg

Warranty period: 5 years

Noise Level: <45 db

Max. speed: 8 mm/s per turn

Colors



RAL9006



RAL9010



RAL9005

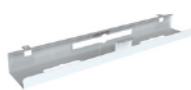
Related products



Single monitor arm



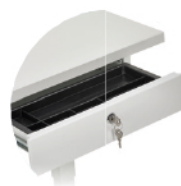
Dual monitor arm



Metal cable tray



Cable tube



Personal drawer



Metal cabinet



Wireless charger



CPU holder

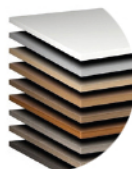


Table top



Leg cover

Product drawing

